

2017 ANNUAL REPORT

MESSAGE TO THE COMMUNITY

This year UCS celebrated its 50th Anniversary milestone and laid the foundation for the next fifty years. UCS conducted a yearlong strategic planning process, reaching out to stakeholders and the broader community to discuss what health and human service issues Johnson County will be facing in the future and the role UCS has in addressing these issues. UCS partnered with Johnson County Government for UCS' Navigating the Future event in June, bringing together more than 200 people from all sectors for a community conversation about a vibrant Johnson County. UCS' strategic planning efforts were supported with a grant from the REACH Healthcare Foundation.



UCS' 50th Anniversary Committee, chaired by board member Donna Lauffer, worked to tell UCS' story throughout 2017. Banners highlighting personal and program success stories that were made possible through the work of UCS and its partners were created and displayed throughout Johnson County. The organization raised more than \$50,000 in recognition of its 50th Anniversary milestone to support the future work and sustainability of UCS.

The year of celebration culminated with a 50th Anniversary luncheon in December bringing together more than 200 community members, including former UCS board and staff leaders, elected officials, current UCS board and Council of Advisors members, city, County, foundation and agency representatives. The luncheon program included a conversation with former state legislators and UCS Distinguished Public Service Award recipients, David Adkins and Carol Sader. David and Carol looked back at UCS' many accomplishments that led to the creation of agencies, programs and services still in existence today, as well as countless studies and collaborations that helped inform the work of private and public health and human service providers. UCS also unveiled its strategic vision for the future.

UCS saw a number of new and expanded initiatives in 2017 that have continued into 2018. UCS is partnering with Johnson County Department of Health and Environment to create the Johnson County Health Equity Network with grant support from the Kansas Health Foundation. Additionally, UCS and area agencies and programs serving at-risk transitional-age youth are working to improve outcomes for this population with grant support from the REACH Healthcare Foundation.

UCS believes improving the health and well-being of our residents is the most important economic investment we can make. The county's economic vitality and sustainability is only as healthy as those who live and work in our communities.

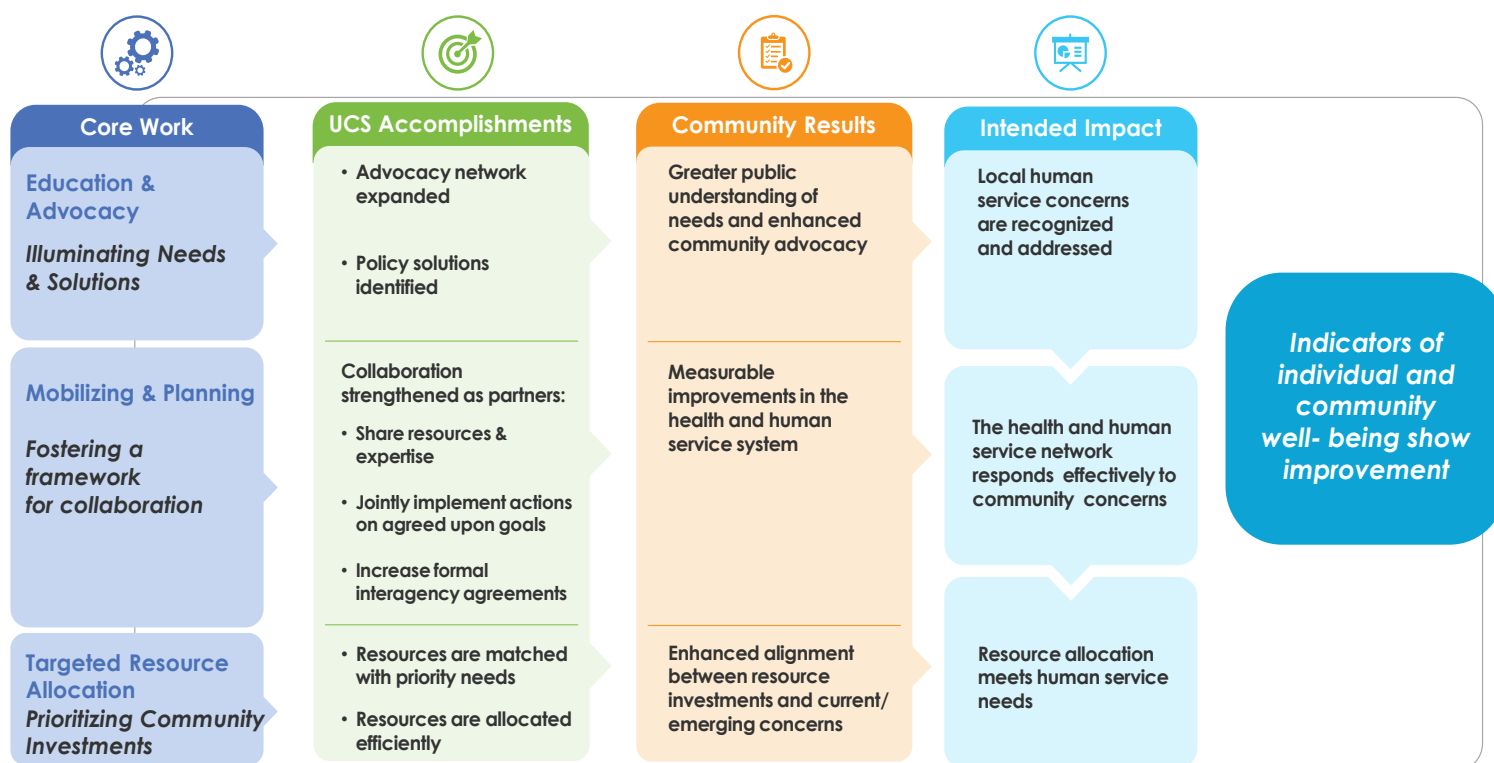
Michael Hockley, UCS Board President

Julie K. Brewer, Executive Director

50 Years of UCS – Celebrating Our Past and Preparing for our Future

United Community Services of Johnson County ended its 50th year articulating a Strategic Vision for ongoing collaboration with community partners, the result of a yearlong strategic planning process. UCS' strategic planning engaged stakeholders from health and human service organizations, County and municipal governments, the business sector, funders, school districts, faith communities and others. Their input sharpened UCS' vision, tactics and desired results. It also guided the development of plans to ensure UCS is prepared to continue to play an active role in responding to emerging needs and advancing services that support people who live and work in Johnson County.

UNITED COMMUNITY SERVICES OF JOHNSON COUNTY'S STRATEGIC VISION



The mission of UCS remains to provide data analysis, lead collaborative planning and mobilize resources to enhance the availability and delivery of health and human services. UCS' vision is that all people have the opportunity to fulfill their potential and contribute to the health and well-being of the community.

Based on the belief that all individuals and entities contribute to and share responsibility for the common good, the following principles guide UCS activities:

- ◆ Human services play a vital role in a healthy community, advance quality of life and contribute to economic vitality.
- ◆ All community sectors play valuable roles in advancing human service solutions.
- ◆ Human services can be strengthened through policy advocacy and resource investment.
- ◆ Collaboration fosters a comprehensive approach to multi-faceted challenges.

UCS' 50th Anniversary Milestone Featured Success Stories and a Community Celebration



UCS' story is best told through the impact of its work. The organization's 50th Anniversary Committee, led by board member Donna Lauffer, embraced this approach by sharing stories the organization helped make possible through its work, community partnerships and collaborations. Banners highlighting agency and program success stories that UCS helped make possible were created and displayed throughout Johnson County in the months leading up to the 50th Anniversary

event. UCS appreciates the partnership of the agencies and programs who participated in the story banner project.

More than 200 community members joined UCS in celebrating the agency's 50th Anniversary at a luncheon in December. Executive Director/CEO of the Council of State Governments, former state legislator and past UCS Distinguished Public Service award recipient David Adkins, and community leader, former state legislator and past UCS Distinguished Public Service award recipient Carol Sader, took the audience back to 1967 and discussed the community



David Adkins and Carol Sader



UCS Current and Past Presidents

work of UCS through the years. Their presentation was highlighted with digital stories of current community collaborations filmed by students from the Blue Valley School District CAPS program.

Luncheon guests included past UCS board and staff leadership as well as state and local elected officials, County and city staff, public safety representatives, health and human services, and business and faith community members.



UCS Current and Past Executive Directors

2017 MAJOR ACCOMPLISHMENTS

The core work of UCS is illuminating needs and solutions through **Education & Advocacy**, fostering a framework for collaboration through **Mobilizing & Planning**, and prioritizing community investments through **Targeted Resource Allocation**.



Education & Advocacy:

Public Policy Forum: The forum, in partnership with United Way of Greater Kansas City and with support from the REACH Healthcare Foundation, brought together more than 150 community members including 15 state legislators from Johnson and Wyandotte counties, local policy makers, health foundation grant makers, human service agencies, city and county staff, and community advocates. UCS and the Community Health Council of Wyandotte County shared how health equity impacts residents and the economic vitality of our communities. Featured presenter David Adkins, Executive Director/CEO of the Council of State Governments, discussed the role federal funding plays at the state level and the potential impact of the President's proposed budget cuts to critical Kansas safety net programs. Legislative panelists Senator Laura Kelly, Representative Kathy Wolfe Moore, and Representative Linda Gallagher discussed the upcoming legislative session, current work of the Child Welfare System Task Force, and status of Mental Health, and SNAP, TANF and other safety net programs.

UCS' **2017 Public Policy Platform** advocated increased access to health care by expanding KanCare (Medicaid) eligibility, and fiscal and taxation policies that support citizens' abilities to reach and maintain economic stability, improve access to programs that promote well-being, and assure employment policies that help low-income workers and increase access to employment.

UCS joined area and state organizations under the leadership of Kansas Appleseed to advocate for the successful passage of SB95 which expands Kansas families' access to supports by allowing telephonic signatures on applications for SNAP/TANF/Child Care subsidies.

Throughout the year, UCS gave community **presentations**, provided **factsheets** and released **reports** including ***A Plan to Increase Income through Employment in Johnson County***. Additionally, UCS is a planning partner with **United Way of Greater Kansas City**, providing **data analysis** on poverty and health and human service issues impacting our community.

The **2017 Human Service Summit: Navigating the Future** brought together more than 200 people from across all sectors to discuss health and human service challenges facing Johnson County over the next five years. The event was a component of UCS' strategic planning with participants identifying priority areas of focus for Johnson County including an expanded transportation system, increased mental health funding, more living wage jobs, increased affordable housing and childcare, and improved access to healthcare.



Mobilizing & Planning

UCS, with grant support from the REACH Healthcare Foundation and the 10th Judicial District Court, convened the **Transitional-Age Youth Planning Project** to develop and support implementation of a plan that coordinates best practices, protocols, and evaluation measures to ensure responsive and adequate delivery of services and supports for at-risk transitional-age youth. A Leadership Team comprised of agencies, programs and departments that serve at-risk youth formed to address the needs of youth who age out of the foster care system without a permanent home, exit the juvenile justice system, experience homelessness, or who have severe and persistent mental illness.

With support of a three and a half year Kansas Health Foundation Healthy Communities grant, UCS and Johnson County Department of Health and Environment convened a multi-sector Leadership Team to create a **Johnson County Health Equity Network**. The Leadership Team will develop an analysis of health equity issues in the county and surrounding region, strategic solutions to mitigate inequity, and work with members of the Health Equity Network and their constituencies to implement a plan to improve health outcomes.

UCS convened the **Children's Coordinating Council**, a network of 30 service providers, quarterly to promote stronger relationships among organizations serving at-risk children and families.

UCS continued its involvement in the **Trauma-Informed Care Project**, which is now a committee of Johnson County Community Violence Action Council (COMVAC). The council meets regularly and provides quarterly training.

In 2017, UCS began an 18 month collaboration with the Johnson County Department of Corrections, serving as its onsite facilitator to address **Disproportionate Minority Contact in the juvenile justice system**. This work is supported by a Title II grant and partners with the W. Haywood Burns Institute to reduce racial and ethnic disparity.



permanent supportive housing projects. In 2017, UCS worked in collaboration with reStart, Inc., to support reStart in securing a five-year federal HHS grant to open a transitional living program for transitional-age youth in Johnson County.

UCS continues to manage the **Human Service Fund**, an important city/County partnership that invests funding resources in nonprofit programs which provide our residents essential health and human services that promote self-sufficiency and build well-being. With funding from 14 cities and Johnson County, \$310,965 was awarded to 14 nonprofit agencies. Approximately 55,000 people benefited from these programs.

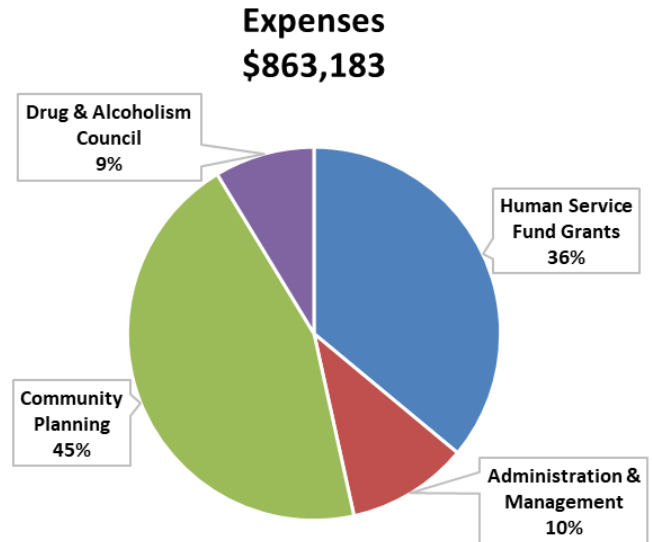
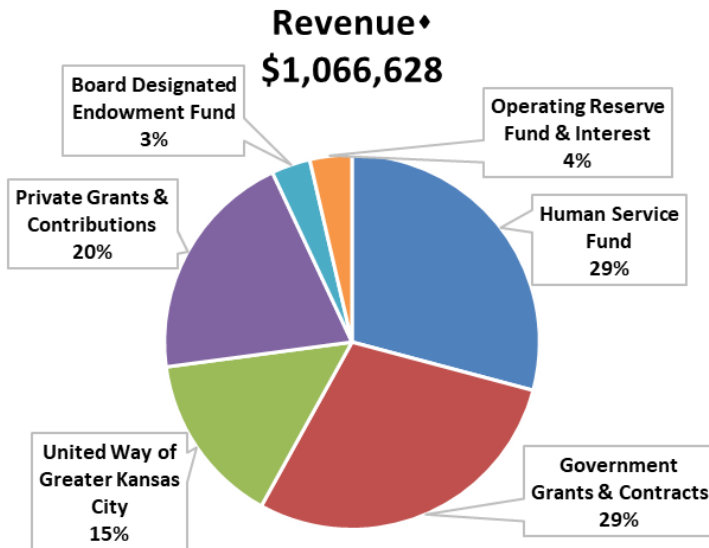
UCS facilitates the **Drug and Alcoholism Council of Johnson County** which, on behalf of the Johnson County Board of County Commissioners and nine cities, oversees the allocation of local Alcohol Tax Funds for substance abuse prevention and treatment programs. Approximately 69,000 people benefited from programs funded in part by Alcohol Tax Funds in 2017. Jurisdictions allocated more than \$1.73 million to 23 programs for direct services.



Targeted Resource Allocation

UCS is the lead agency for **Johnson County's Continuum of Care on Homelessness**, engaging more than 50 organizations from the human service sector, local government, schools, and the faith community to respond to homelessness and poverty. In 2017, local agencies were awarded more than \$677,000 from the Department of Housing and Urban Development to support transitional housing, rapid rehousing, and

2017 FINANCIAL REVIEW*



♦Revenue includes \$93,569 in grant income received in 2017 intended for use in 2018 and \$74,483 in Interest Income from Endowment and Reserve Funds.

*Audited Financials for 2017 will be available July 2018.

UCS 2017 BOARD OF DIRECTORS

Michael Hockley, President	Brian S. Brown
Justin Nichols, Vice President	Jennifer Bruning
Kate Allen, Secretary	Tara S. Eberline
Maury L. Thompson, Treasurer	Cheryl Harrison-Lee

Rev. Lee Jost	Tom Robinett
Roxann Kerr Lindsey	Sandra Sanchez
Donna Lauffer	Paul Snider
Janis McMillen, PhD	Kevin Tubbesing
Leo J. Nunnink	Rick Worrel

COUNCIL OF ADVISORS

Gary Anderson	Hon. Ed Eilert	Jill Quigley	Elaine Tatham, PhD
Mary Birch	Jeffrey O. Ellis	Clint Robinson	Stephen Tatum
Dick Bond	SuEllen Fried	Carol Sader	David Warm
Pat Colloton	Ellen Hanson	Joseph Sopcich, PhD	Ron Wimmer, PhD
David Cook, PhD	Terrie Huntington	Brad Stratton	Hannes Zacharias
Hon. Peggy Dunn	Audrey Langworthy	Charlie Sunderland	

DRUG AND ALCOHOLISM COUNCIL

Ryan Erker, Chair	Capt. Troy Duvanel	Cathy Lawless	Robert Sullivan
Jennifer Granger, Vice-Chair	Nikki Green	Emily Meissen-Sebelius	Jill Vincente
Jessica Hembree, Secretary	Jen Jordan-Spence	Jamie Murphy	
Wendy Biggs, MD	Marcy Knight	Liana Riesinger	
Major David Brown	Joe Kordalski	Kevin Schutte	

UCS STAFF

Julie K. Brewer, Executive Director
Marya Schott, Director of Resource Allocation

Valorie Carson, Director of Community Planning
Kathryn Evans Madden, Director of Education & Planning
Cathy Goodwin, Administrative Coordinator

MAJOR FUNDING SUPPORT



United Way of Greater Kansas City

CORPORATE, FOUNDATION, GOVERNMENT AND OTHER CONTRIBUTORS

Ash Grove Cement Company	Gilmore & Bell	Kiewit Energy Group, Inc.
AT&T	Johnson County CDBG	KU Edwards Campus
Capitol Federal Foundation	Johnson County Community College Foundation	Lathrop & Gage
CBIZ, Inc.	Johnson County Court Administration	REACH Healthcare Foundation
Central Bank of the Midwest	Johnson County Government	Spencer Fane
Colonial Church in Prairie Village	Johnson County Mental Health Center	St. Luke's Health System
CrossFirst Bank	Kansas Gas Service	Shawnee Mission Medical Center
ETC Institute	Kansas Health Foundation	10th Judicial Court DV Grant Fee
Foulston & Siefkin	KCP&L	UMB Bank
		Westar Energy

INDIVIDUAL CONTRIBUTORS

\$1000 & Above

Kate Allen
Steve & Julie Brewer
Hon. Peggy Dunn
Jeff & Carol Lynne Ellis
Michael Hockley
Roxann Kerr Lindsey
Fred and Carol Logan
Janis McMillen
Jill Quigley
Victor & Helen Regnier Fund
Sandra Sanchez
John J. Sullivan, Jr. Trust
Charles Sunderland
Maury Thompson
Karen Wulfschuhle

\$250 - \$500

Pat Colloton
Nathan & Tara Eberline
SuEllen & Harvey Fried
Dolores Furtado
Carol Gonzales
Terrie Huntington
Audrey Langworthy
Robert Meneilly
Justin Nichols
Leo Nunnink
Tom Robinett
Renee Schmidt
Brad & Kimberly Stratton
Kevin Tubbesing
Gene Wilson

Under \$250

Jacob Albers
Patricia All
Brian & Susan Brown

Jennifer Bruning
Valorie Carson
Vicki Charlesworth
Gerald Lee Cross
Erika Dvorske
Mary Estrada
Lennie Facklam
Michael & Amy Falk
Debra & Andrew Filla
Cindy Green
Nikki Green
Ellen Hanson
Janee' Hanzlick
Robert Hester
Lee Jost
Anita Kaiser
Teresa Kelly
Stewart & Joy Koesten
Diane Kuhn
Donna Lauffer
Carol Lehman
Catherine & David Logan

Nancy Lusk
Karen Martley
Laura McConwell
Olivia & Sophia Moody
Greg & Cherie O'Halloran
Aaron Otto
Julie Riddle
Kimberly Rowlands
Carol Sader
Marya Schott
Ronald Shaffer/RLS Architects
Margaret Steele
Sue Storm
Tricia Suellentrop
Steve Tatum
Terrie VanZandt-Travis
Eric Wade
Tom & Anita Wertz
Rick & Susan Worrel
Brittney Wray
Kitty Wright
Hannes Zacharias

Alcohol Tax Fund & Human Service Fund Partners

Alcohol Tax Fund participating jurisdictions: Gardner, Leawood, Lenexa, Merriam, Mission, Olathe, Overland Park, Prairie Village, Shawnee, and Johnson County Government.

Human Service Fund contributing jurisdictions: De Soto, Edgerton, Gardner, Leawood, Lenexa, Merriam, Mission, Olathe, Overland Park, Prairie Village, Roeland Park, Shawnee, Spring Hill, Westwood, Westwood Hills, and Johnson County Government.



No other organization has made the kind of deep and lasting impact on the health and well-being of Johnson County citizens than that of United Community Services. From creating access to healthcare to promoting child welfare; from fighting substance abuse to helping low income families build financial stability, UCS has improved countless lives across its half century of service to the community. At United Way, we count UCS among our most valued partners. Its expertise in understanding and responding to community needs makes an invaluable contribution to the nature of United Way's work in the Kansas City region.

BRENT STEWART

President and CEO of the United Way of Greater Kansas City.



UCS has a long history of partnership with Johnson County Government in addressing the health and human service needs of our residents. UCS' research and data consistently shines the light on our community's needs. Their collaborative leadership leads to the creation of innovative programs and services vital for a healthy Johnson County. We look forward to another 50 years of partnership.

ED EILERT

Board Chairman | Johnson County Board of Commissioners

UCS 2017 Annual Report can be viewed and downloaded at ucsjoco.org