



# Homelessness in Johnson County

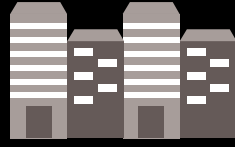
## Fall 2022 PIT Snapshot

ON OCTOBER 5TH

# 221

people in Johnson County were experiencing homelessness

TRANSITIONAL



27%

UNSHELTERED



18%

SHELTER



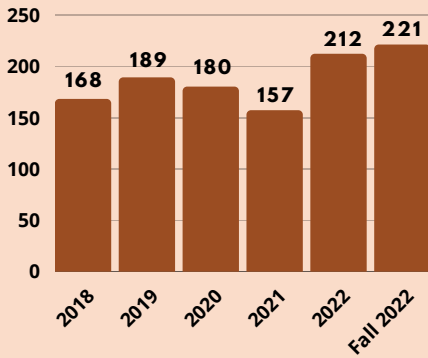
55%

\*\*percent of those counted on October 5th

### WHAT IS PIT?

Point in Time (PIT) count is a snapshot on a **single night** in the last ten days of January of everyone in the county who is experiencing homelessness.

Johnson County PIT counts for the last 5 years



### EMPLOYMENT



44%

OF ADULTS COUNTED WERE CURRENTLY EMPLOYED

### INCOME



64%

OF ADULTS COUNTED HAD INCOME (I.E. EMPLOYMENT AND/OR DISABILITY BENEFITS)

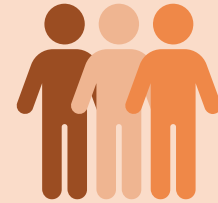
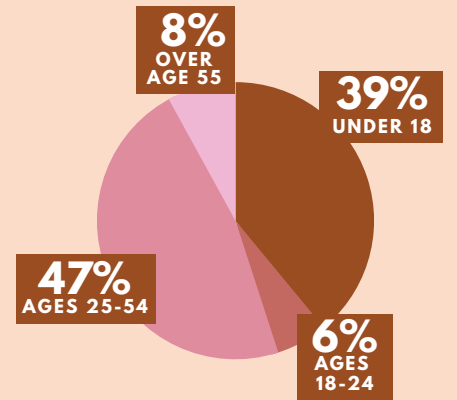
### FIRST-TIME



49%

OF HOUSEHOLDS WERE EXPERIENCING THEIR FIRST INCIDENT OF HOMELESSNESS

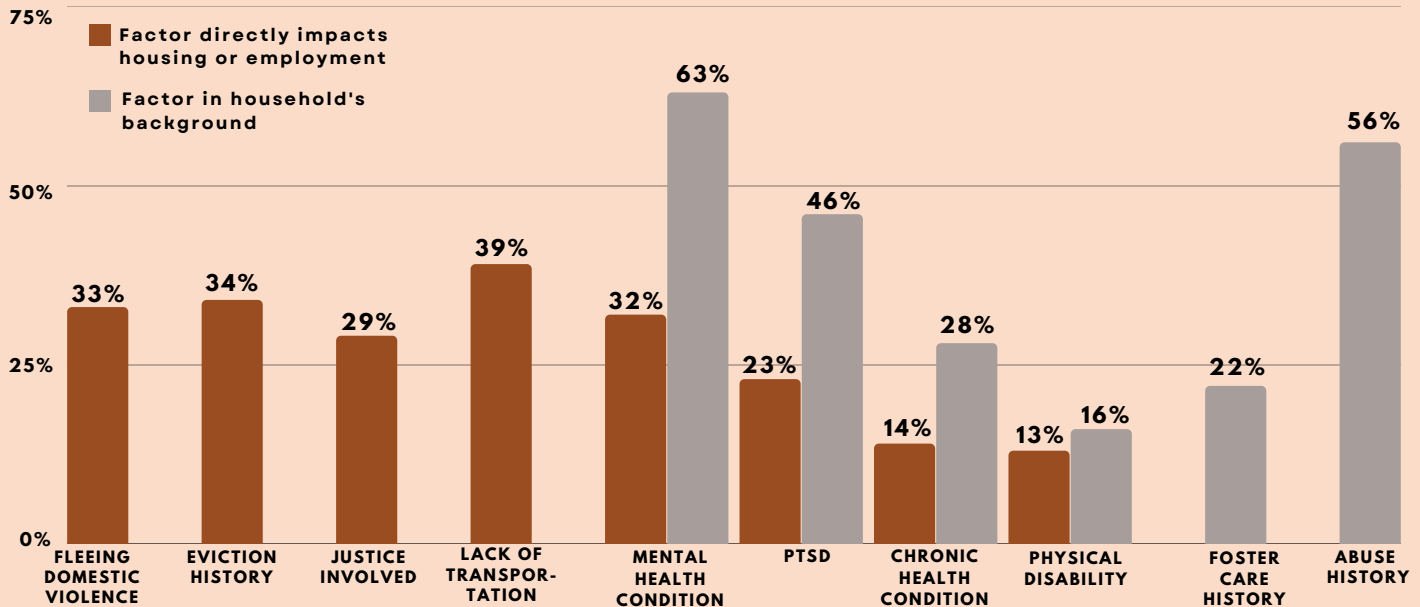
### PIT COUNT BY AGE



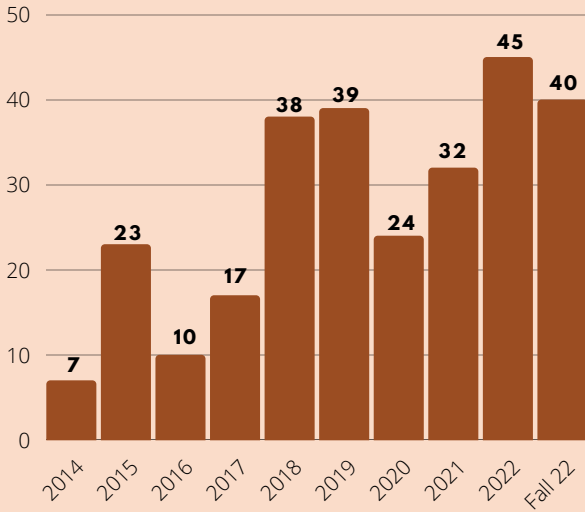
65%

OF HOUSEHOLDS COUNTED WERE ADULTS-ONLY

## HOUSEHOLDS FACE MANY CHALLENGES

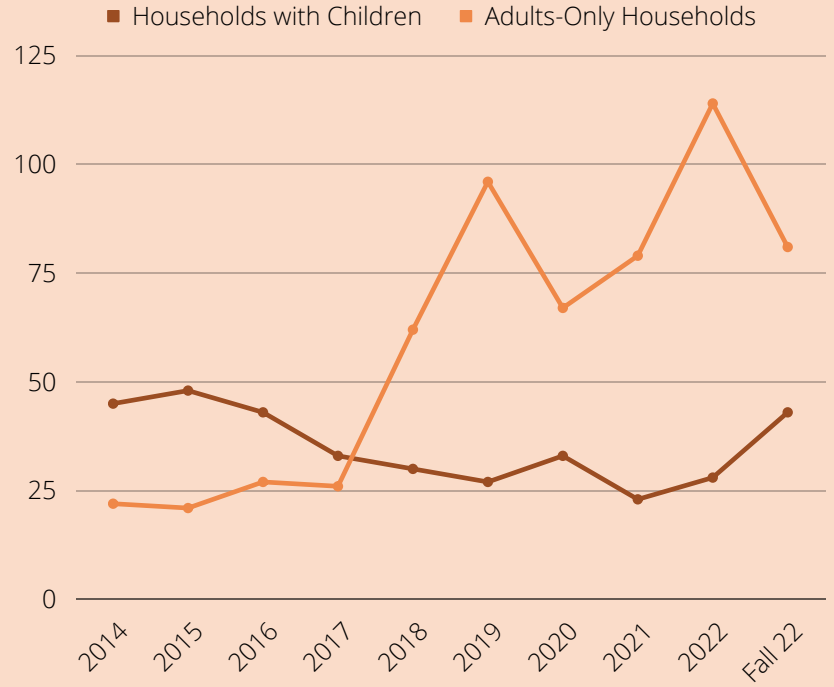


### UNSHELTERED PERSONS



Number of people counted who were staying outdoors, in a vehicle, or other places not meant for habitation on the night of the PIT Count

### HOUSEHOLDS BY TYPE



### ADDITIONAL LONG-TERM DATA

Have you ever lived in a vehicle in Johnson County?

**48%** 

of households said yes

Have you ever lived outside in Johnson County?

**48%** 

of households said yes

Have you ever been forced to relocate from an outdoor sleeping location in Johnson County?

**25%** 

of households said yes

Have you ever experienced violence while you were unhoused?

**26%** 

of adults said yes



# Homelessness in Johnson County

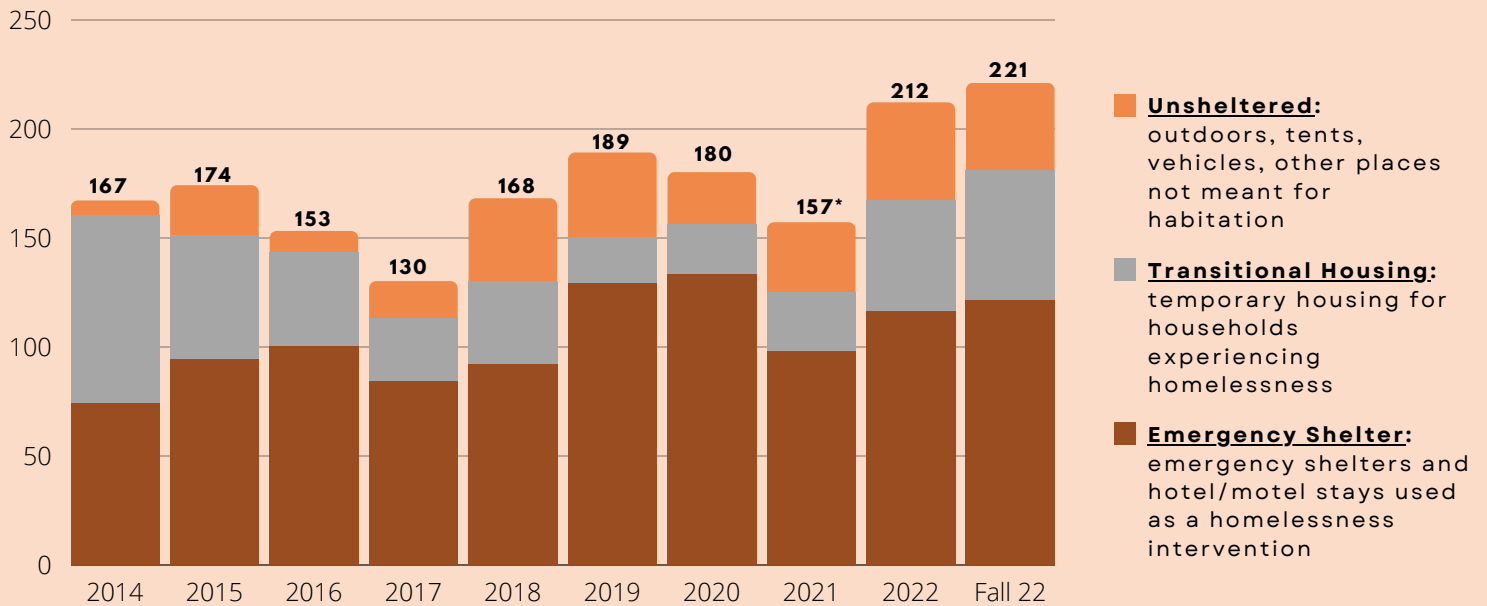
## Understanding the Data

### CONTINUUM OF CARE & THE PIT COUNT

Johnson County's Continuum of Care on Homelessness is a collaboration of public and private service providers committed to quickly and effectively responding to housing crises to either prevent or end homelessness among Johnson County residents. The U.S. Department of Housing and Urban Development (HUD) requires that Continuums of Care conduct an annual Point in Time (PIT) count of households within their geographic region experiencing homelessness on one night in the last 10 days of January. The count is a snapshot on a single night that is used to monitor trends year to year and identify unmet needs among residents experiencing homelessness. A fall count is not required by HUD; Johnson County's Continuum of Care conducted the Fall 2022 count for local data analysis.

**Who is counted:** people staying in shelters, transitional housing programs (dedicated to homeless households, up to 24 months), or in unsheltered locations such as tents, vehicles, or other places not meant for habitation. HUD does not count households who are temporarily doubled up with friends or family.

### PIT COUNTS BY LOCATION



\*Note: The 2021 PIT count was likely lower due to safety protocols implemented during the COVID-19 pandemic

### TRENDS IN PIT DATA

The Johnson County Continuum of Care wanted to compare homelessness counts during milder weather (the HUD PIT count is during the coldest time of year) and during the time of year when cold weather shelter beds are not available. In comparing the January, 2022 count and the October, 2022 count:

- The total count rose slightly from 212 to 221 people
- The number of unsheltered people was similar, 45 people to 40 people
- Although the cold weather beds were not open in October, another agency received one-time funds to place people in hotels so the number of people staying in sheltered situations remained similar

Over the last 10 years, the number of households with children has remained relatively flat in the county and the number of adults-only households has increased dramatically. The number of people who were unsheltered on the night of the count has also increased over the last 10 years. **These trends indicate the need for a shelter for adults experiencing homelessness in Johnson County.**